

AUXILIARY WASTE RECEIVING / TREATMENT SYSTEM

for the
GEORGETOWN MUNICIPAL WATER & SEWER SERVICE
Georgetown, Kentucky

January, 2005



Index of Drawings

- COVER SHEET
- 1 SITE PLAN
- 2 PLAN and SECTION — PRIMARY CLARIFIER
DEMOLIOTION and UPGRADE
- 3 AUXILIARY WASTE RECEIVING STATION
- 4 STANDARD DETAILS

RECORD DOCUMENTS

Upon completion of the Work, the Design Professional shall compile for and deliver to the client a reproducible set of Record Documents conforming to the marked-up prints, drawings and other data furnished to the Design Professional by the Contractor. This set of Record Documents will show the reported location of the Work and significant changes made during the construction process. Because these Record Documents are based on unverified information provided by other parties which will be assumed reliable, the Design Professional cannot and does not warrant their accuracy.

DLR Consultants, LLC

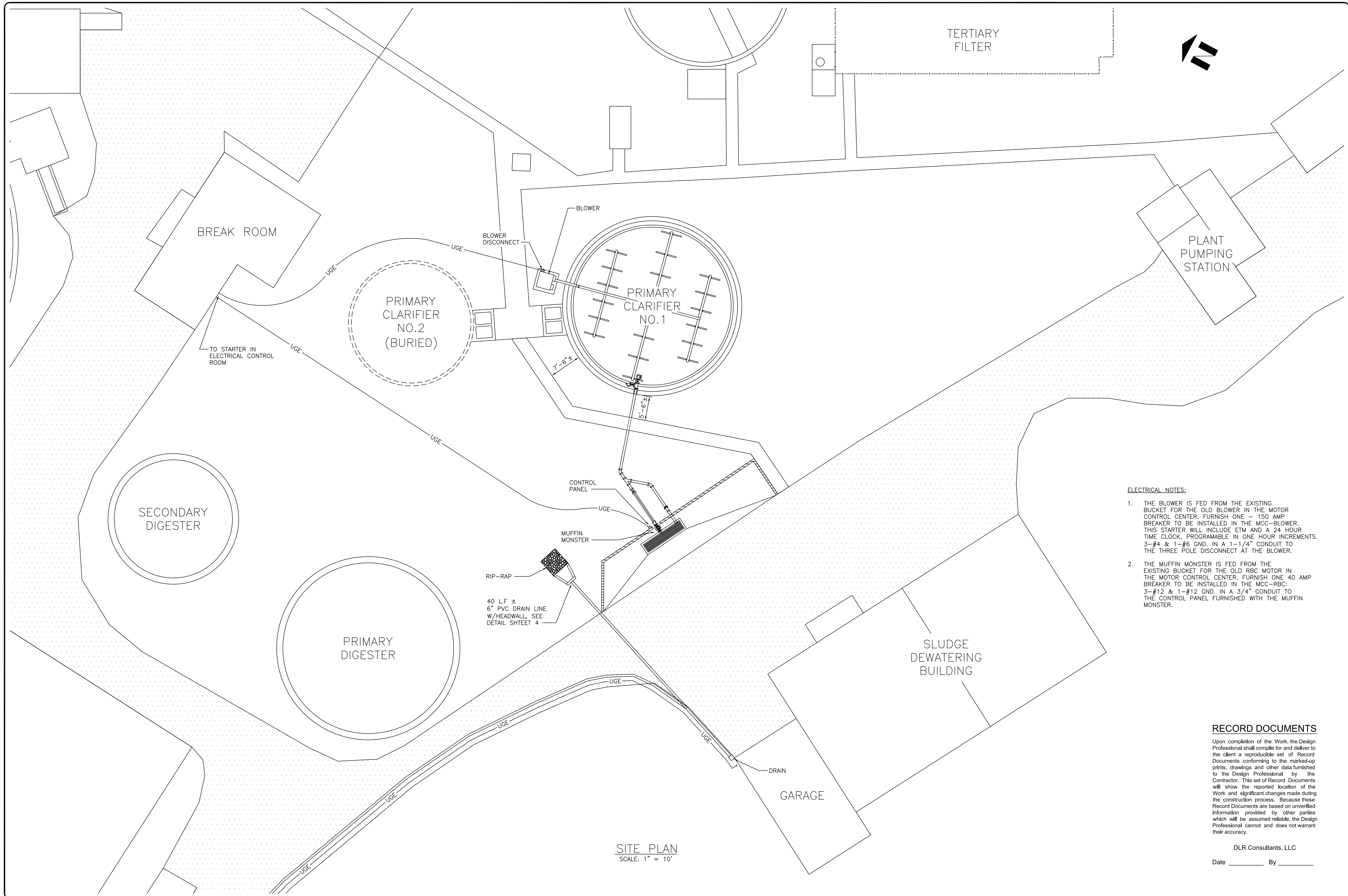
Date _____ By _____

SET NO. _____
RR PROJECT NO. 04-0010

RR Consultants, LLC
*A Ray Group
Company*

2201 Regency Road • Suite 302 • Lexington, KY 40503 • (859)313-5005

Drawing file: E:\AS-BUILTS\GMWSS As-Builts\WWTP #1 Auxiliary Waste System\RD 04-0010 GMWSS 01.dwg
 Day & Time: Nov 16, 2011 12:20pm
 Login Name: DMulder



SITE PLAN
 SCALE: 1" = 10'

ELECTRICAL NOTES:

1. THE BLOWER IS FED FROM THE EXISTING BUCKET FOR THE OLD BLOWER IN THE MOTOR CONTROL CENTER. FURNISH ONE - 150 AMP BREAKER TO BE INSTALLED IN THE MCC-BLOWER. THIS STARTER WILL INCLUDE ETM AND A 24 HOUR TIME CLOCK, PROGRAMABLE IN ONE HOUR INCREMENTS. 3-#4 & 1-#6 GND. IN A 1-1/4" CONDUIT TO THE THREE POLE DISCONNECT AT THE BLOWER.
2. THE MUFFIN MONSTER IS FED FROM THE EXISTING BUCKET FOR THE OLD RBC MOTOR IN THE MOTOR CONTROL CENTER. FURNISH ONE 40 AMP BREAKER TO BE INSTALLED IN THE MCC-RBC: 3-#12 & 1-#12 GND. IN A 3/4" CONDUIT TO THE CONTROL PANEL FURNISHED WITH THE MUFFIN MONSTER.

RECORD DOCUMENTS

Upon completion of the Work, the Design Professional shall compile for and deliver to the client a reproducible set of Record Documents conforming to the marked-up prints, drawings and other data furnished to the Design Professional by the Contractor. This set of Record Documents will show the reported location of the Work and significant changes made during the construction process. Because these Record Documents are based on unverified information provided by other parties which will be assumed reliable, the Design Professional cannot and does not warrant their accuracy.

DLR Consultants, LLC
 Date _____ By _____

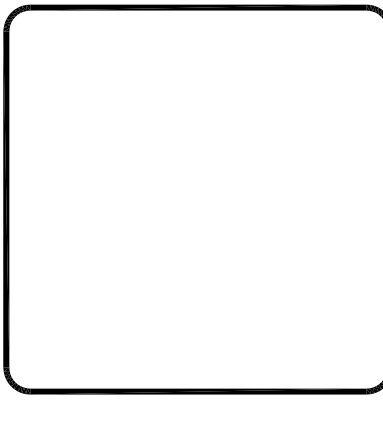
RR Consultants, LLC
A Ray Group Company
 2201 Regency Road • Suite 302 • Lexington, KY 40503 • (859)313-5005



AUXILIARY WASTE RECEIVING / TREATMENT SYSTEM

SCALE:	AS NOTED
JOB No.:	04-0010
DESIGNED BY:	PBD
DETAILED BY:	CDS
CHECKED BY:	PBD
DATE:	JANUARY 2005
COPYRIGHT © 2005 RR CONSULTANTS, LLC	

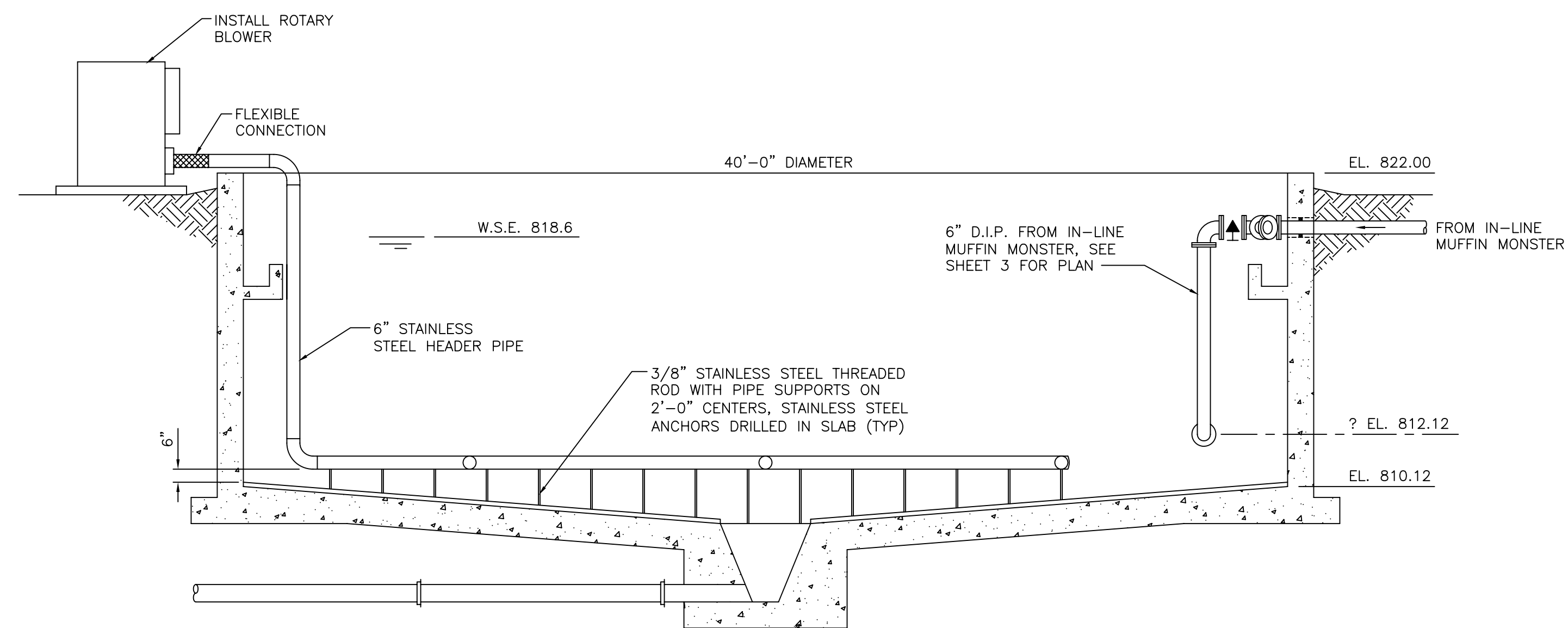
REVISIONS:	
REVISED	3-25-05
RECORD DRAWING	10-04-06



SHEET: **1**
 OF 4

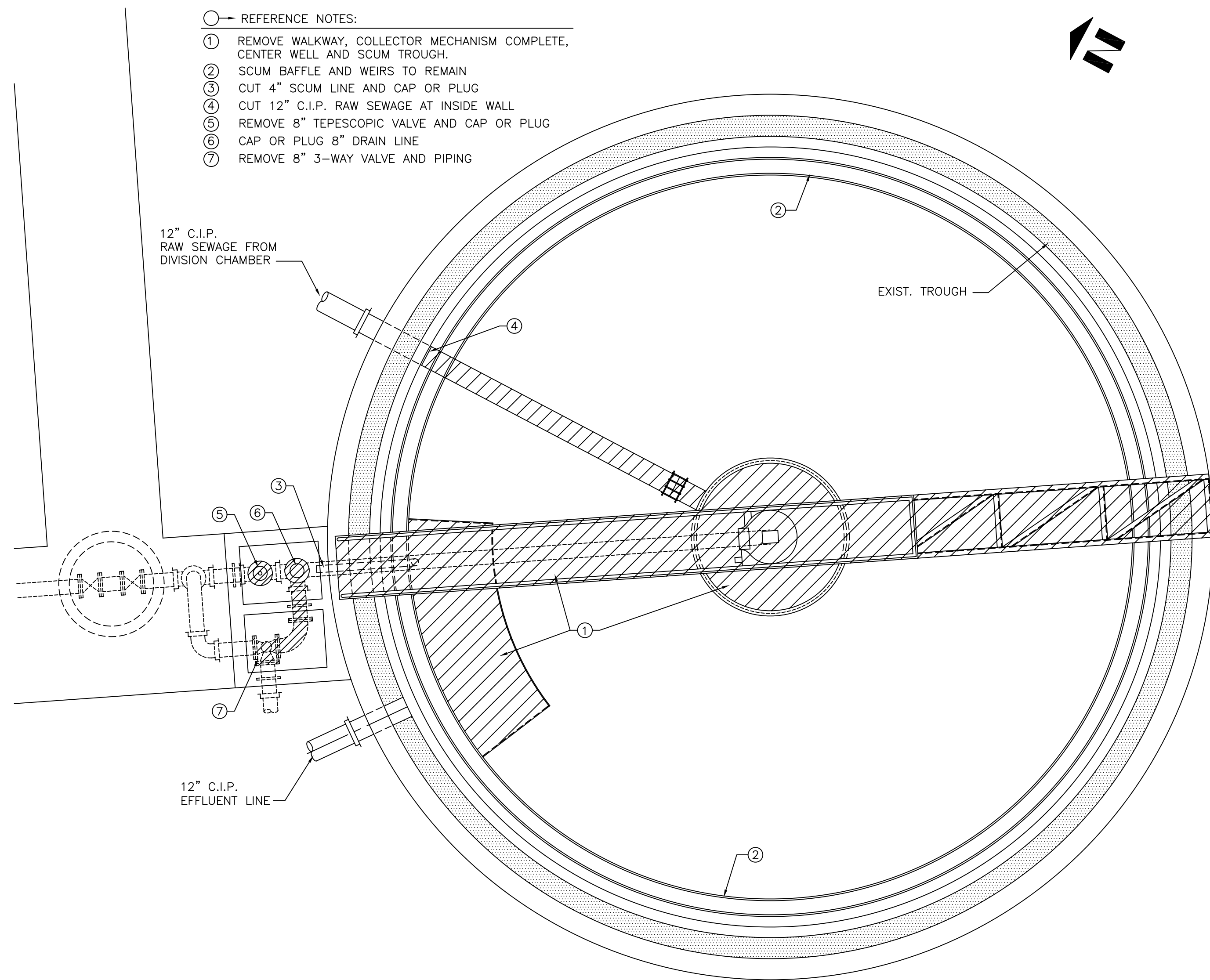


EXISTING PRIMARY CLARIFIER
NOT TO SCALE

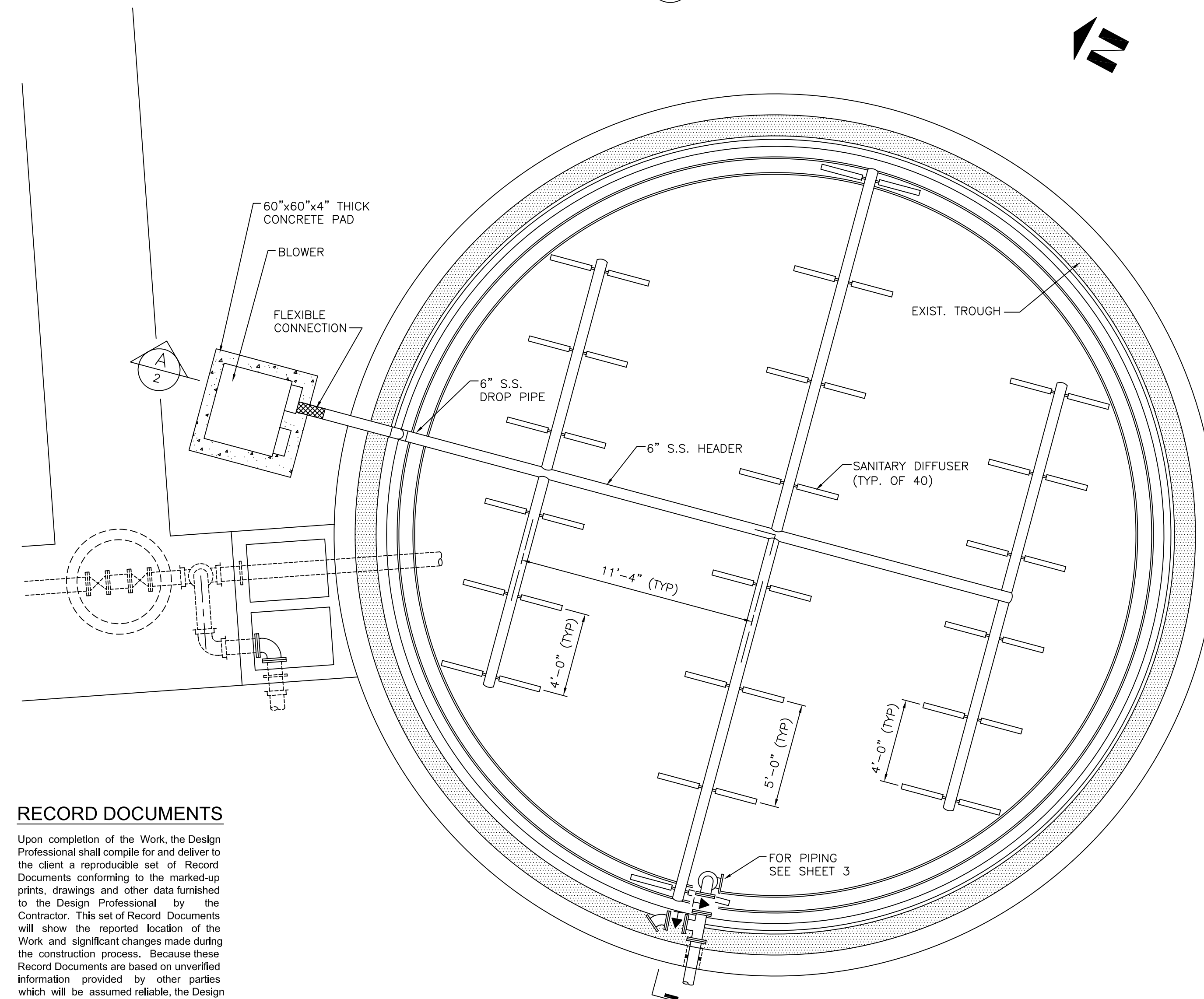


SECTION
SCALE: 1/4" = 1'-0"

- REFERENCE NOTES:
- ① REMOVE WALKWAY, COLLECTOR MECHANISM COMPLETE, CENTER WELL AND SCUM TROUGH.
 - ② SCUM BAFFLE AND WEIRS TO REMAIN
 - ③ CUT 4" SCUM LINE AND CAP OR PLUG
 - ④ CUT 12" C.I.P. RAW SEWAGE AT INSIDE WALL
 - ⑤ REMOVE 8" TELESCOPIC VALVE AND CAP OR PLUG
 - ⑥ CAP OR PLUG 8" DRAIN LINE
 - ⑦ REMOVE 8" 3-WAY VALVE AND PIPING



PLAN - PRIMARY CLARIFIER DEMOLITION
SCALE: 1/4" = 1'-0"



PLAN - PRIMARY CLARIFIER UPGRADE
SCALE: 1/4" = 1'-0"

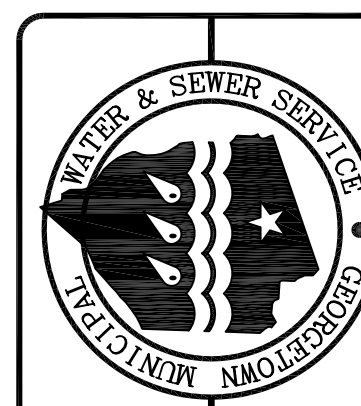
RECORD DOCUMENTS

Upon completion of the Work, the Design Professional shall compile for and deliver to the client a reproducible set of Record Documents conforming to the marked-up prints, drawings and other data furnished to the Design Professional by the Contractor. This set of Record Documents will show the reported location of the Work and significant changes made during the construction process. Because these Record Documents are based on unverified information provided by other parties which will be assumed reliable, the Design Professional cannot and does not warrant their accuracy.

DLR Consultants, LLC

Date _____ By _____

Drawing file: E:\AS-BUILTS\GMWSS As-Builts\WWTP #1 Auxiliary Waste System\RD 04-0010 GMWSS 02.dwg
 Day & Time: Nov 16, 2011 - 12:38pm
 Login Name: DMulder



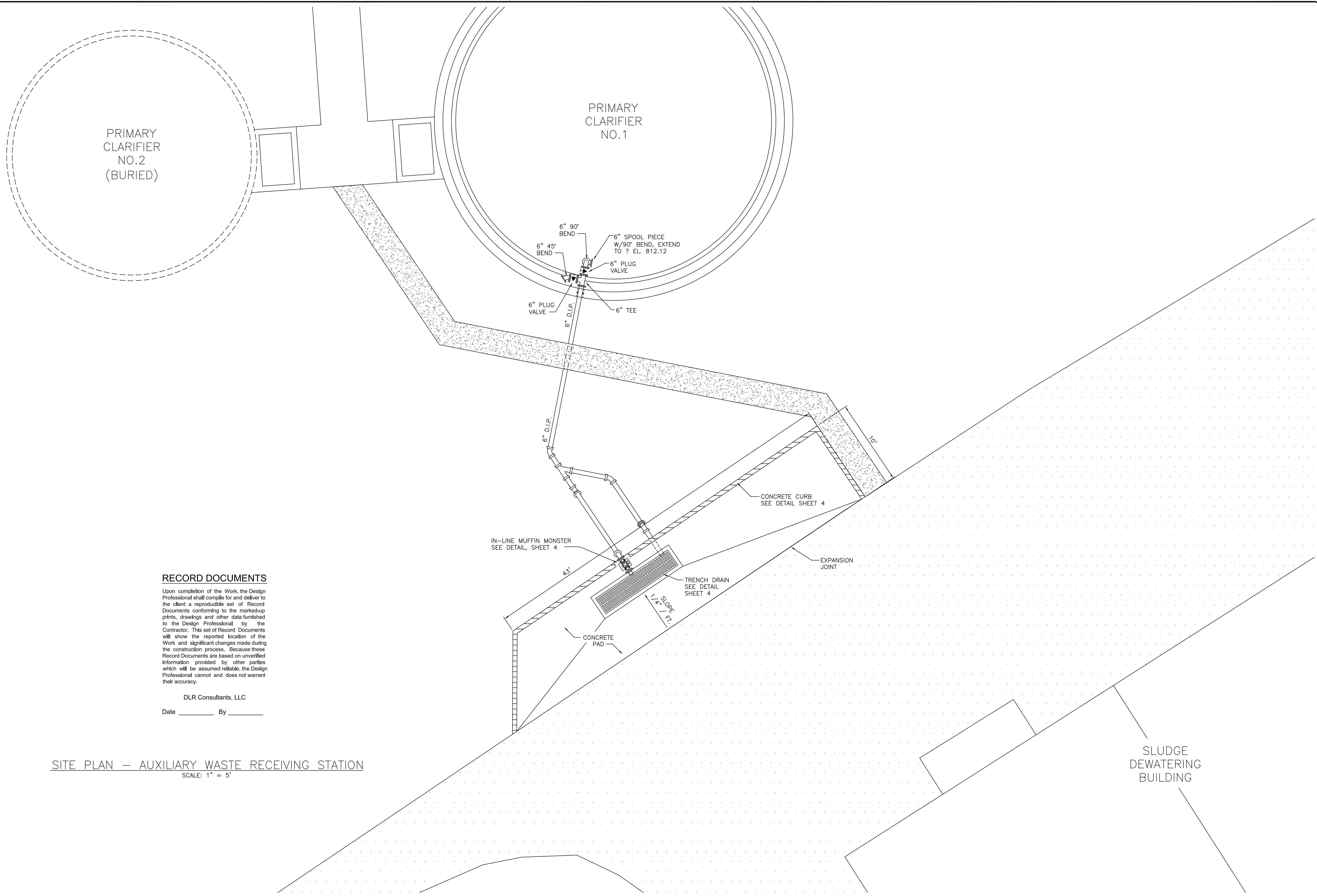
AUXILIARY WASTE RECEIVING / TREATMENT SYSTEM

SCALE:	AS NOTED
JOB No.:	04-0010
DESIGNED BY:	PBD
DETAILED BY:	CDS
CHECKED BY:	PBD
DATE:	JANUARY 2005
COPYRIGHT © 2005 RR CONSULTANTS, LLC	

REVISIONS:	
RECORD DRAWING	10-04-06

SHEET:	
--------	--

Drawing file: E:\AS-BUILTS\GMWSS As-Builts\WWTP #1 Auxiliary Waste System\RD 04-0010 GMWSS 03.dwg
 Day & Time: Nov 16, 2011 12:39pm
 Login Name: DMulder



RECORD DOCUMENTS

Upon completion of the Work, the Design Professional shall compile for and deliver to the client a reproducible set of Record Documents conforming to the marked-up prints, drawings and other data furnished to the Design Professional by the Contractor. This set of Record Documents will show the reported location of the Work and significant changes made during the construction process. Because these Record Documents are based on unverified information provided by other parties which will be assumed reliable, the Design Professional cannot and does not warrant their accuracy.

DLR Consultants, LLC
 Date _____ By _____

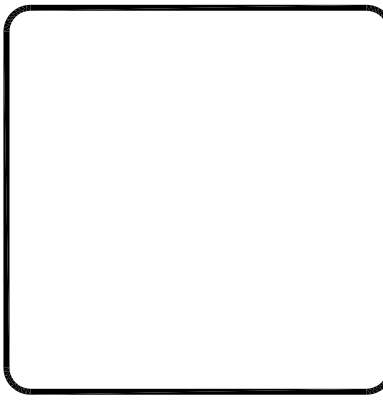
SITE PLAN - AUXILIARY WASTE RECEIVING STATION
 SCALE: 1" = 5'



AUXILIARY WASTE RECEIVING / TREATMENT SYSTEM

SCALE:	AS NOTED
JOB No.:	04-0010
DESIGNED BY:	PBD
DETAILED BY:	CDS
CHECKED BY:	PBD
DATE:	JANUARY 2005
COPYRIGHT © 2005 RR CONSULTANTS, LLC	

REVISIONS:	
REVISED	3-25-05
RECORD DRAWING	10-04-06

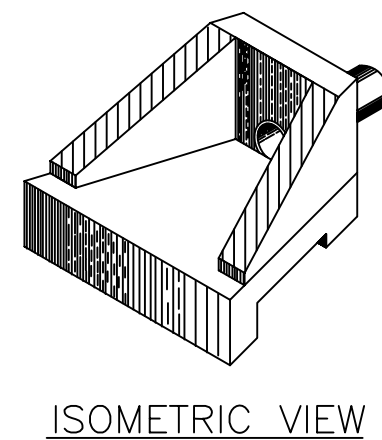


Drawing file: E:\AS-BUILTS\GMWSS As-Builts\WWTP #1 Auxiliary Waste System\RD 04-0010 GMWSS 04.dwg
 Day & Time: Nov 16, 2011 12:40pm
 Login Name: D Mulder

PIPE		DIMENSIONS						CLASS A CONC	REINF STEEL
DIA OR EQUIV. DIA.	SHAPE	C	E	F	L	W	T	CU. M.	KG.
6"	○	1'-9"	2'-6"	2'-3"	3'-6"	4'-0"	2"	0.58CY	7 Lbs.

GENERAL NOTES

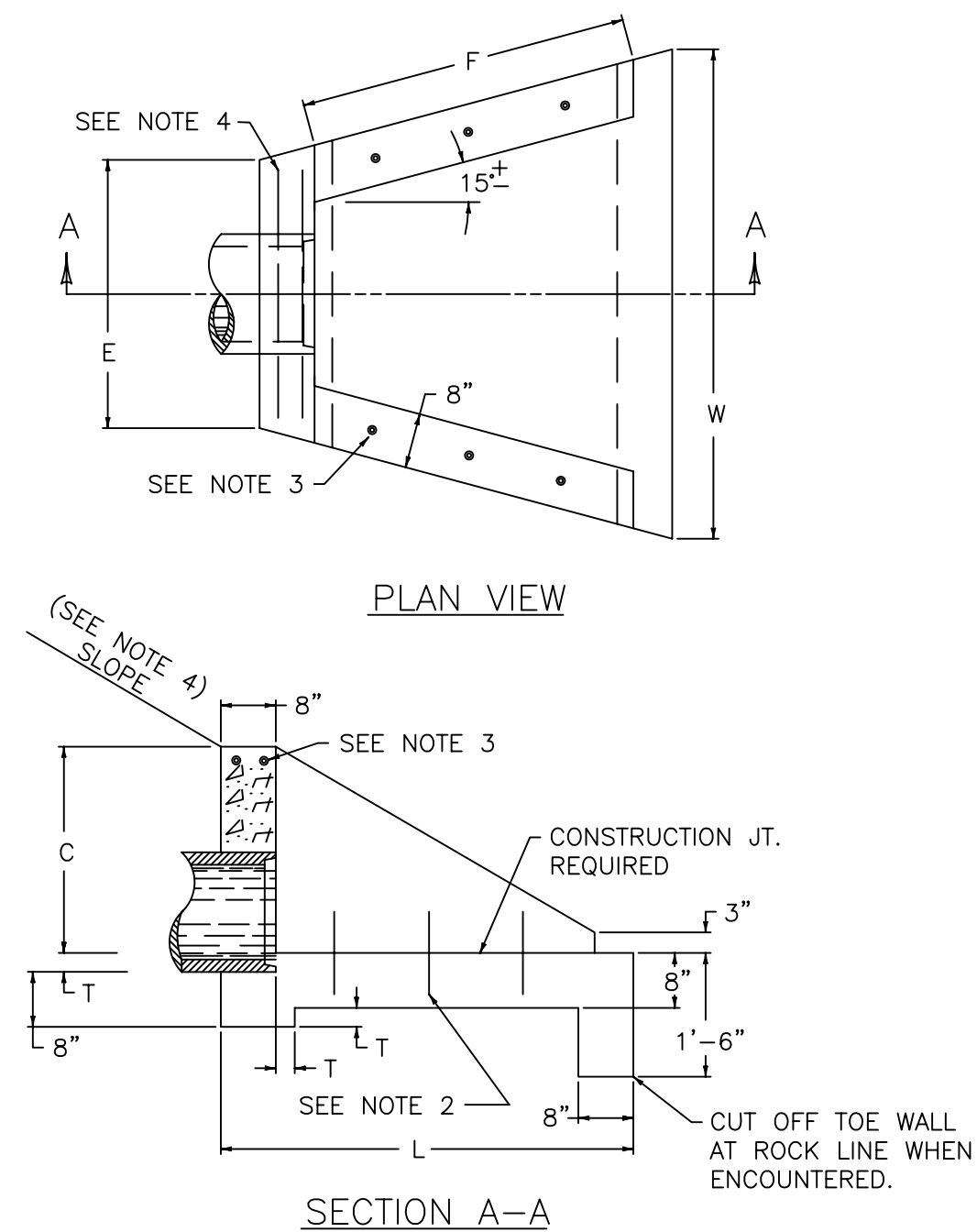
1. REINFORCING STEEL : MINIMUM GRADE 40, BARS EVENLY SPACED.
2. 6 - NO. 4 x 12 INCH DOWEL BARS.
3. 2 - NO. 4 x (E DIMENSION MINUS 4 INCHES).
4. SLOPES SHALL BE WARPED TO FIT HEADWALL WHEN PIPE IS SKEWED AND/OR NORMAL SLOPE VARIES FROM 1:2.
5. WING ANGLES AND/OR DIMENSIONS MAY BE ALTERED DURING CONSTRUCTION TO ACCOMMODATE FLOW OF WATER.
6. APRON BETWEEN WINGS SHALL BE SLOPED IN DIRECTION OF FLOW EQUAL TO SLOPE OF PIPE. FRONT FACE OF HEADWALL SHALL REMAIN VERTICAL.
7. ALL DIMENSIONS ARE IN INCHES UNLESS SHOWN OTHERWISE.



ISOMETRIC VIEW

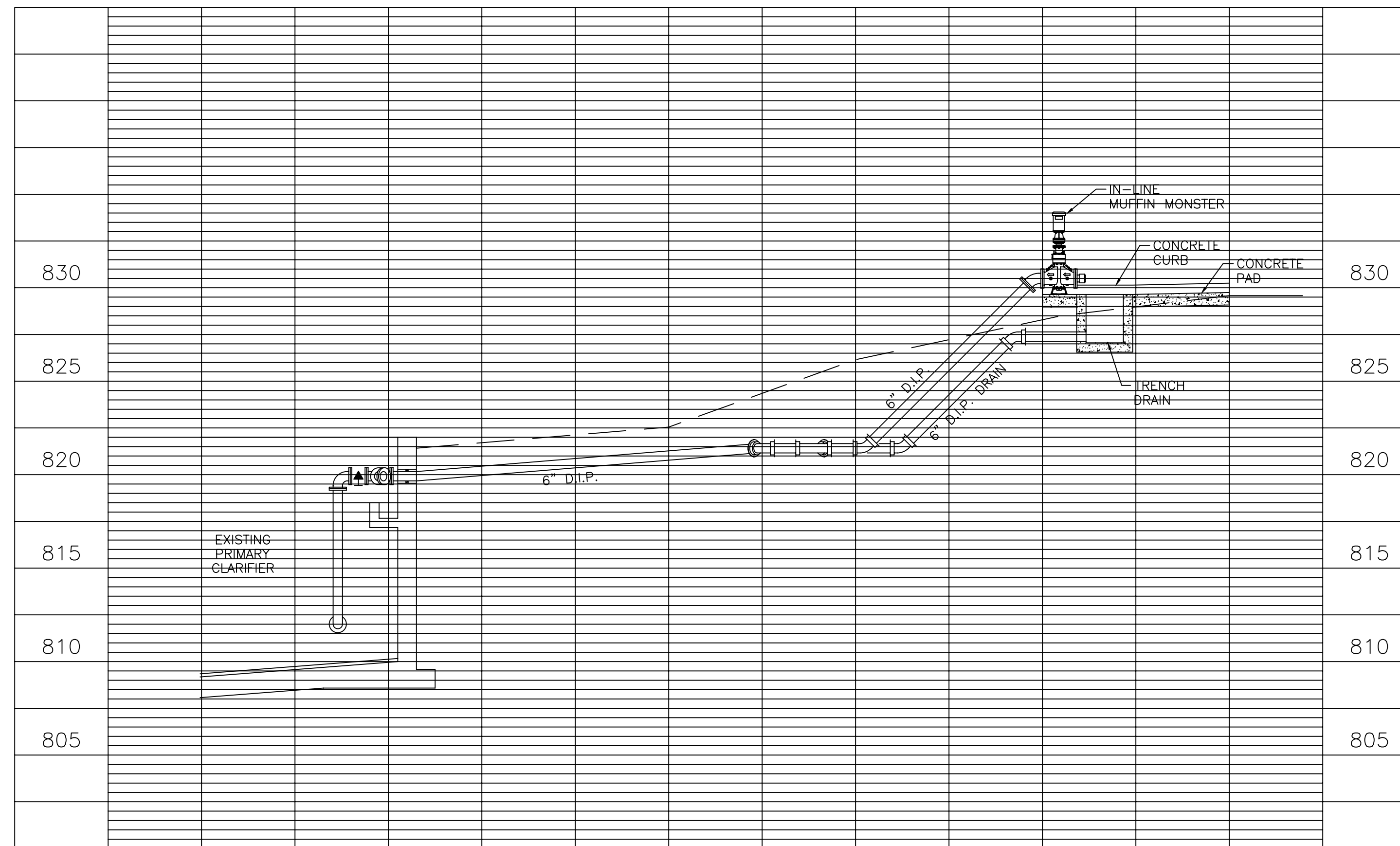
DRAIN PIPE HEADWALL DETAIL

NOT TO SCALE



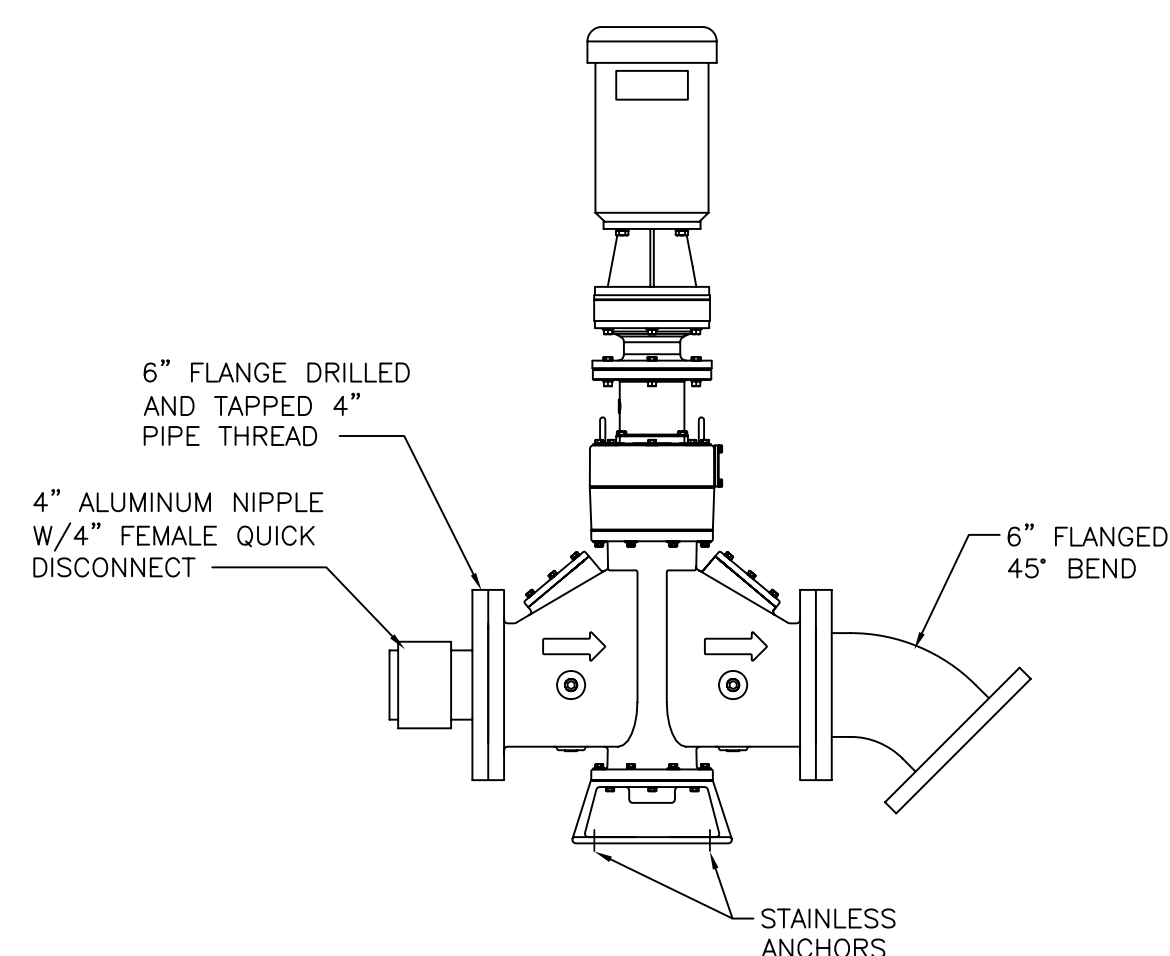
PLAN VIEW

SECTION A-A



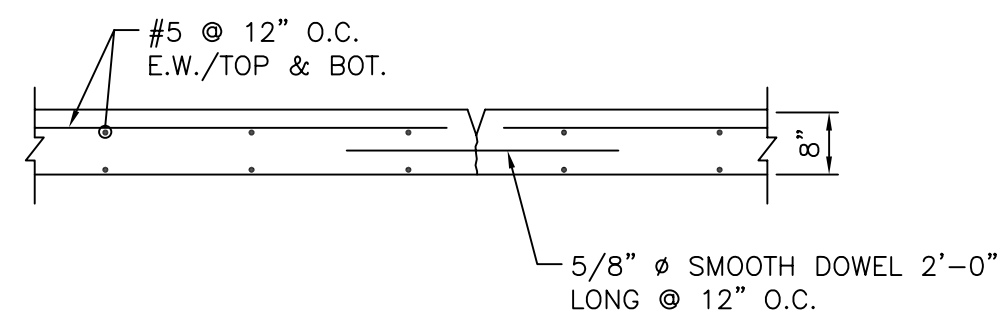
PROFILE - AUXILIARY WASTE RECEIVING STATION

SCALE: 1"=5' HORIZ., 1"=5' VERTICAL



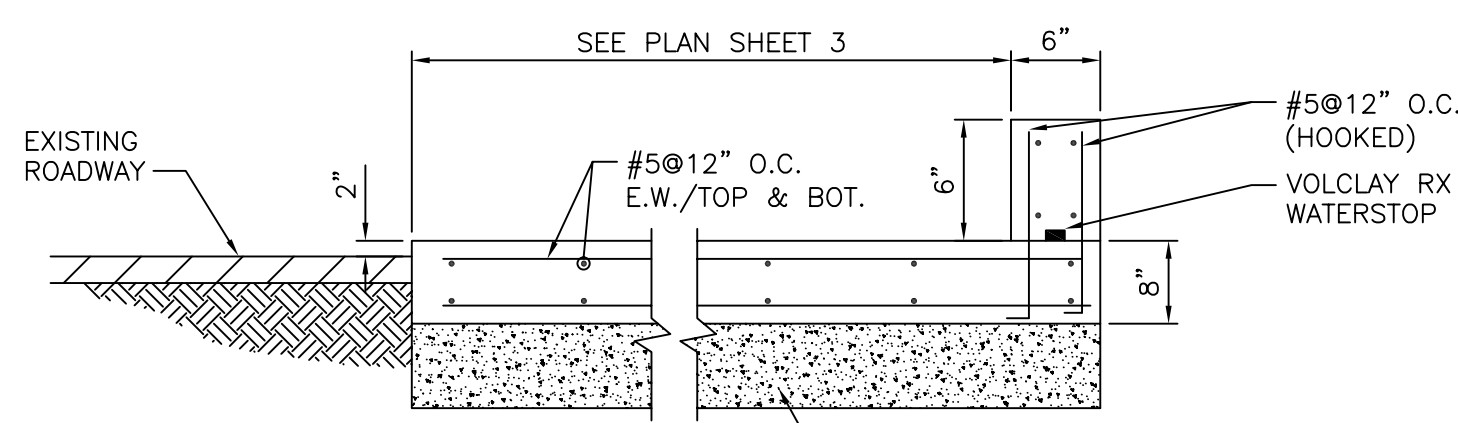
IN-LINE MUFFIN MONSTER

NOT TO SCALE



DETAIL - CONTROL/CONTRACTION JOINT

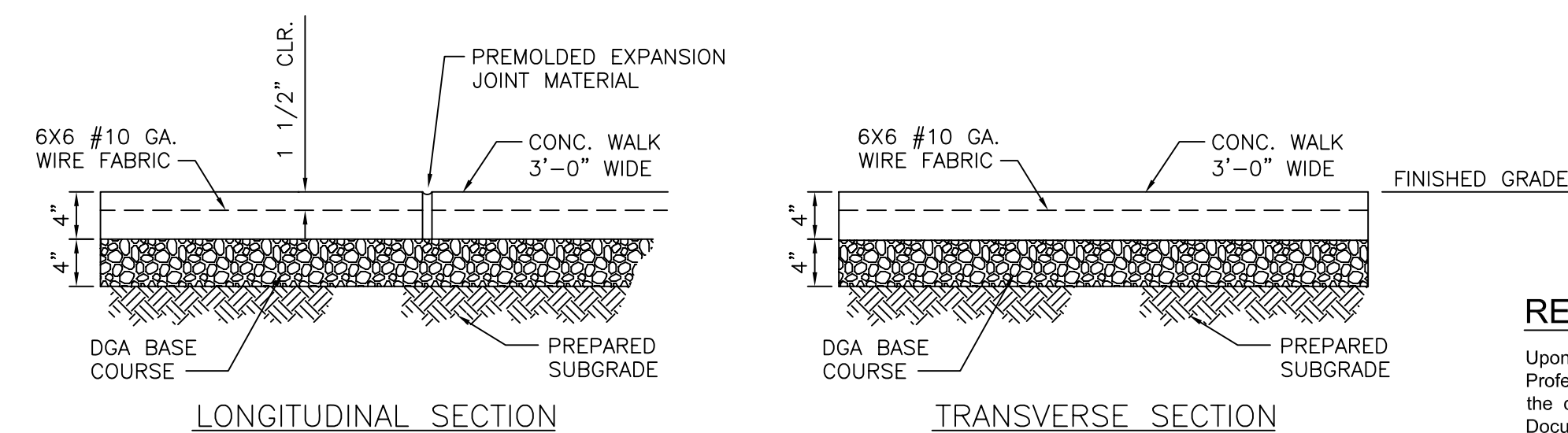
NOT TO SCALE



DETAIL - CONCRETE SLAB and CURB

NOT TO SCALE

NOTE:
ALL CONCRETE FOR DRIVE AND PAD SHALL BE 4000psi STRENGTH CONCRETE



LONGITUDINAL SECTION

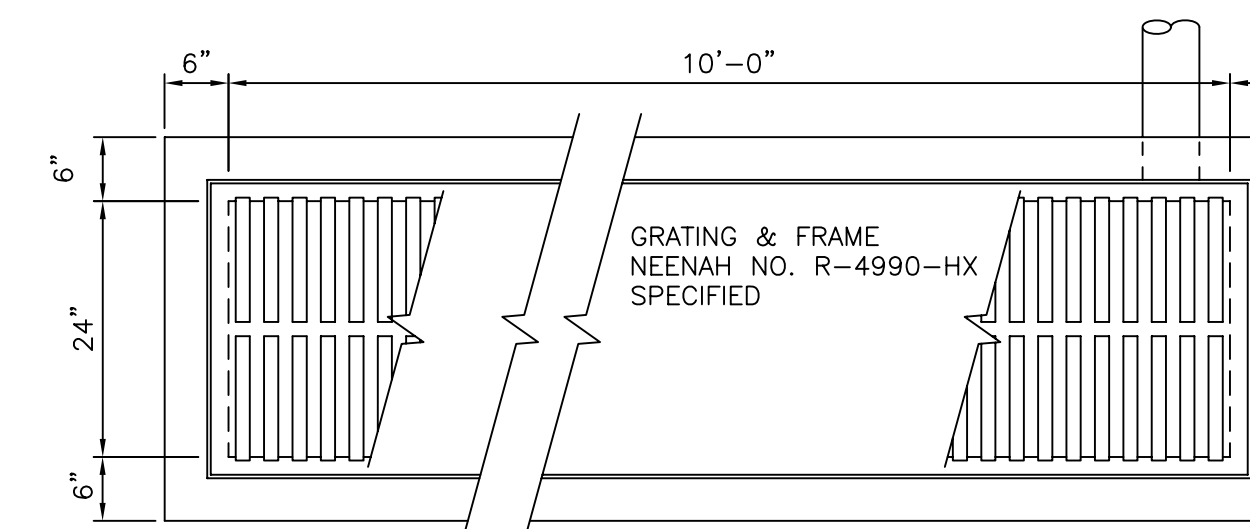
TRANSVERSE SECTION

NOTES:

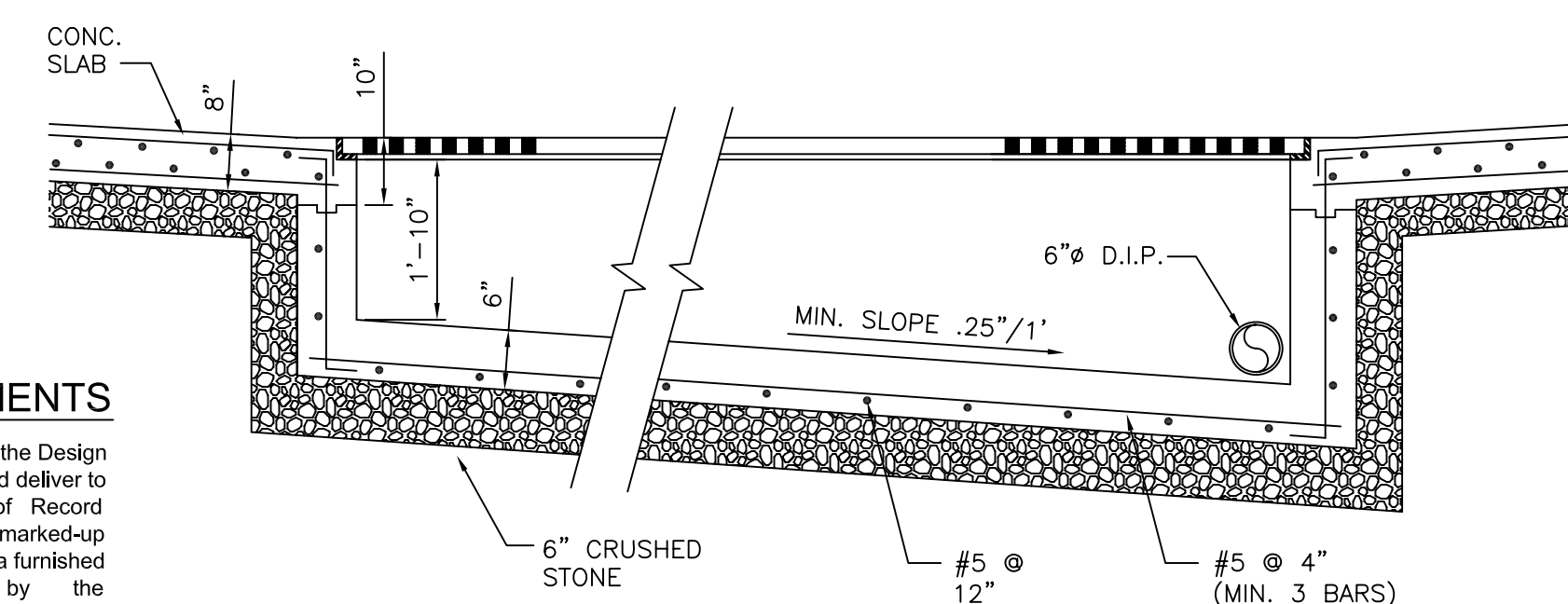
1. EXPANSION JOINTS TO BE 24'-0" C-C MAX.
2. SCORE CONCRETE AT 4'-0" INTERVALS.

CONCRETE SIDEWALK - TYPE 2

NOT TO SCALE



PLAN



SECTION

DETAIL - TRENCH DRAIN

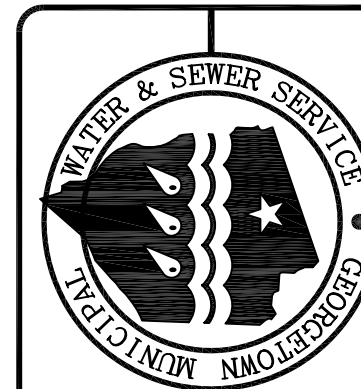
NOT TO SCALE

RECORD DOCUMENTS

Upon completion of the Work, the Design Professional shall compile for and deliver to the client a reproducible set of Record Documents conforming to the marked-up prints, drawings and other data furnished to the Design Professional by the Contractor. This set of Record Documents will show the reported location of the Work and significant changes made during the construction process. Because these Record Documents are based on unverified information provided by other parties which will be assumed reliable, the Design Professional cannot and does not warrant their accuracy.

DLR Consultants, LLC

Date _____ By _____



MUNICIPAL WATER & SEWER SERVICE
 AUXILIARY WASTE RECEIVING / TREATMENT SYSTEM

SCALE: AS NOTED
 JOB No.: 04-0010
 DESIGNED BY: PBD
 DETAILED BY: CDS
 CHECKED BY: PBD
 DATE: JANUARY 2005
 COPYRIGHT © 2005
 RR CONSULTANTS, LLC

REVISIONS:
 RECORD DRAWING 10-04-06

SHEET:
 4
 OF 4

RR Consultants, LLC
 A Ray Group Company
 2201 Regency Road • Suite 302 • Lexington, KY 40503 • (859) 313-5005