

ADDENDUM NO. 4  
TO THE CONTRACT DOCUMENTS  
for the construction of  
**McCROSKEY ISLAND WWTP EXPANSION**

Date: July 27, 2022  
Project No.: C6A08007

**City of Sevierville, TN**  
**McCroskey Island Wastewater Treatment Plant**

**To All Planholders and/or Prospective Bidders:**

The following changes, additions, and/or deletions are hereby made a part of the Contract Documents for the construction of **McCroskey Island WWTP Expansion** for Sevierville, Tennessee dated July 2022 as fully and completely as if the same were fully set forth therein:

**A. QUESTIONS AND ANSWERS**

1. **Question 1:** Vol 1. 5.5.2.2. "Bidder shall submit with its Bid a certified statement of the scrap index in effect on the date of the Bid." Can you provide an example of what you're looking for with this requirement?

**Response:** Bidders may provide a signed letter from the ductile iron pipe supplier that states the Index for scrap in effect on the date of the bid. A similar letter provided for a bid contained the following: "On (bid date of the project), the Fastmarkets Index for scrap was \$685/Ton."

2. **Question 2:** Detail 4027-201 refers to type V915 for the mud valve. Please provide a spec for the mud valves.

**Response:** See below under PART 3, SPECIFICATIONS.

3. **Question 3:** Sheet 140D2002 shows the discharge from all the W3 Pumps as 4". 008-N-0018 shows 4" & 6" discharges. Please confirm the correct sizes of the discharges.

**Response:** Discharges are to be 4". SEE PART 4, DRAWINGS.

4. **Question 4:** The grit pump and washing system piping is called out as HDPE except in some areas as noted on the drawings. Sheets 010-D-2001, 2002, & 3001 call out for HDPE fittings and show them connecting with grooved couplings. According to the Specifications Section 40 27 00.14 grooved fittings would be DI Victaulic XL not HDPE. Please clarify the expectation of the material requirements for this line. Are there any lining required on the DI spools and fittings?

## MCCROSKEY ISLAND WWTP EXPANSION

**Response:** Grit suction (4"-GS-DIP) and discharge (4"-GS-HDPE) line materials are as noted on the drawings. Section 40 27 00.14 notes that both molded HDPE and grooved DI fittings are acceptable. Grooved fittings shall be black enamel lined.

5. **Question 5:** Sheet 008-N-003 indicates that there should be 3 effluent connections to the grit washer. The drawings indicate 2 connections. Please clarify which is correct.

**Response:** The grit washer has 3 effluent connections: 8"DR-DIP, 4-DR-DIP, and 2"-DR-DIP. The 2"DR-DIP and ball valve are shown on 010-D-3001, but not labeled – see PART 4 DRAWINGS. The grit washer outlet connections are also noted in Section 44 42 41 Grit Removal System, Paragraphs G.3.d, G.4.b, and G.4.c.

6. **Question:** Vol. 2, 32 11 23, P. 005. Gravel Surfacing is defined in the specifications as "Maximum Completed Lift Thickness: 9 inches. Completed Course Total Thickness: As Shown". The detail for this section is shown on drawing 005-C-9004, detail 3215-260. In this detail, the Base Course thickness is shown as "\*". What is the thickness of this base course?

**Response:** See PART 4 DRAWINGS

### **B. PART 1, PROCUREMENT REQUIREMENTS**

1. Section 00 41 13, Bid Form, Page 5, Paragraph 5.5.2.2, DELETE the word "charge".

### **C. PART 2, CONTRACTING REQUIREMENTS**

1. Section 00 52 13, Agreement, Page 8, ADD Paragraph 9.5.2  
9.5.2 Boycott of Israel. The Contractor certifies that it is not currently engaged in, and covenants that it will not, for the duration of the Contract, engage in a Boycott of Israel, as that term is defined in Tenn. Code Ann. § 12-4-127.

### **D. PART 3, SPECIFICATIONS**

1. Section 01 29 00, Payment Procedures, Page 4, Paragraph I.1 and I.2, DELETE the word "charge" in both paragraphs.
2. Section 35 20 16.25 Fabricated Slide Gates, ADD Paragraph 2.03.E.6. as follows:
6. WACO Products, Inc.

MCCROSKEY ISLAND WWTP EXPANSION

3. Section 40 27 02 Process Valves and Operators, ADD Paragraph 2.05.H.4 as follows:
  - “4. Type V915 Mud Valve 4 Inches to 24 Inches:
    - a. Cast-iron frame, yoke, and gate; heavy-duty 125-pound flange style, bronze seat, Buna-N seal, rising stem, bronze stem and stem nut, 2-inch square operating nut, Type 304 stainless steel extension stem; stem guides spaced for L/R of 200 maximum.
    - b. Manufacturers:
      - 1) Troy Valve.
      - 2) Trumbull Industries, Inc.
      - 3) Clow Valve Company.”
4. Section 40 99 00 Package Control Systems, Paragraph 2.05.N.1.d, ADD the following sentence to the end of this paragraph:

“Firmware shall be no less than Version 33.”
5. Section 44 42 19.06 Geared Centrifugal Blower System, Paragraph 2.05 G.2, DELETE this paragraph in its entirety and RENUMBER subsequent paragraphs.
6. Section 44 42 24.03 Secondary Clarifier Mechanism Suction Header Manifold Type, Paragraph 2.07:
  - a. A.1, ADD the phrase “or gear motor” after “primary helical gear reduction”.
  - b. A.3, DELETE this paragraph in its entirety and RENUMBER subsequent paragraphs.
  - c. F.1, REPLACE “42 inches” with “40 inches”.
  - d. F.3, REPLACE “two-piece assembly” with “one-piece assembly”.
  - e. F.6, DELETE this paragraph in its entirety and RENUMBER subsequent paragraphs.
  - f. F.7, REPLACE “felt seal” with “neoprene seal.” and DELETE “and vertical neoprene dust shield.”.
7. Section 44 42 27 Submerged Effluent Launder,
  - a. Paragraph 2.02 D.1, REPLACE “12 inches” with “15 inches”.
  - b. Paragraph 2.07 B.2, REPLACE “104 degrees F” with “115 degrees F”.

MCCROSKEY ISLAND WWTP EXPANSION

**E. PART 4, DRAWINGS**

1. 005-C-9004: On detail 3215-260 REPLACE the asterisk (\*) on the base course depth dimension with 8”
2. 008-N-0003: REPLACE drawing in its entirety with the attached.
3. 008-N-0017: On the suction side of the Post Aeration Blowers, DELETE 140 FIT45001 and 140FIT45002.
4. 008-N-0018: Grids C2/C3, discharge valves and piping associated with 140PMP23102, CHANGE 6” to 4”.
5. 008-N-0025: On the suction side of the Digester Blowers, DELETE 165FIT73001, 165FIT73002, 165FIT73003 and 165FIT73004.
6. 010-D-3001: Section C, ADD the following label on the drain line at the bottom of the Grit Washer: “2” V307”.
7. 050-S-2000, -2001, -2002, -2003, -2004, -2005: ROTATE the North Arrow at the bottom center of these drawings 90 degrees clockwise.
8. 050-S-2002: Grids A4/A5, REVISE the 35’-0” dimension to 35’-3” extending the end of the inner channel wall by 3” to the North.
9. 050-S-2004: Grid A5, REVISE the 6’-0” dimension to 6’-3” extending the end of the inner channel wall by 3” to the North.
10. 080-D-2001: Keynote 5 – REVISE the 24” invert elevation to 882.28.
11. 080-D-2002: Detail 3 – REPLACE the Dimension Chart with the following:

DIMENSION CHART		
SECONDARY CLARIFIERS 1 AND 2 (080)		SECONDARY CLARIFIERS 3 AND 4 (090, 091)
45 DEG	A – ANGLE	45 DEG
6”	B – ORIFICE LOCATION	18”
PER EQUIPMENT SUPPLIER	BS – ORIFICE SPACING	PER EQUIPMENT SUPPLIER
3”	C – FASTNER LOCATION	3”
18”	F – DCB LENGTH	18”
26.163”	E – DIAGONAL LENGTH	40.305”
18.5”	H – HEIGHT	28.5”
9”	L – DISTANCE TO LIQUID	9”
4”	FB – FREEBOARD DISTANCE	4”
18.5”	W - WIDTH	28.5”
884.60	LL – LIQUID LEVEL (ADF)	884.60

MCCROSKEY ISLAND WWTP EXPANSION

12. 090-D-3001: On the right side of Section B, REVISE the 30" SE-DIP IE (OUT) elevation to 881.44.

All Bidders shall acknowledge receipt and acceptance of this Addendum No. 4 in the Bid Form or by submitting the Addendum with the bid package. Bid Forms submitted without acknowledgment or without this Addendum will be considered in nonconformance.

Jacobs

  
Project Manager

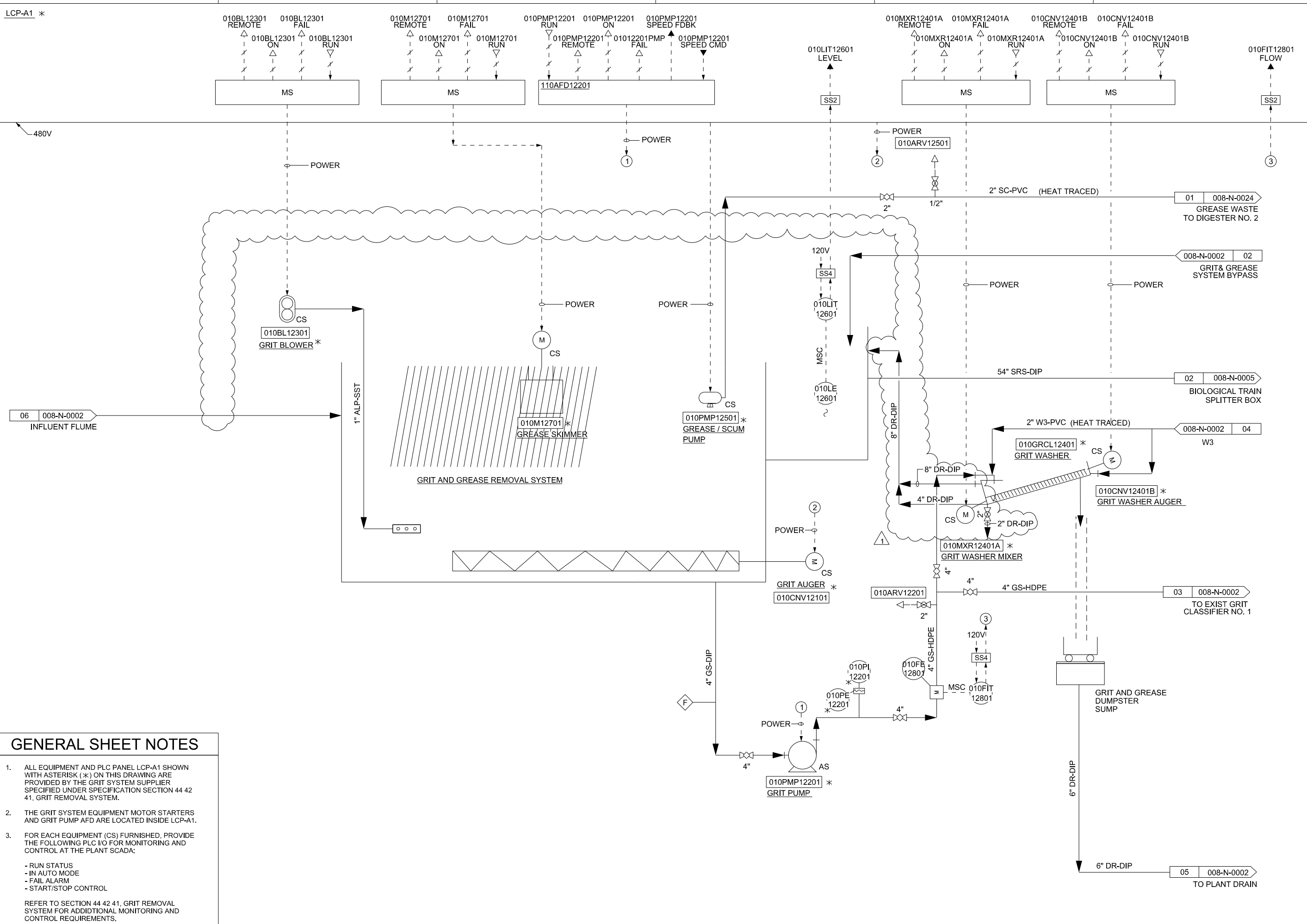
Appended hereto and part of Addendum No. 4:  
Drawing 008-N-0003

**END OF ADDENDUM**

**GENERAL SHEET NOTES**

- ALL EQUIPMENT AND PLC PANEL LCP-A1 SHOWN WITH ASTERISK (\*) ON THIS DRAWING ARE PROVIDED BY THE GRIT SYSTEM SUPPLIER SPECIFIED UNDER SPECIFICATION SECTION 44 42 41, GRIT REMOVAL SYSTEM.
  - THE GRIT SYSTEM EQUIPMENT MOTOR STARTERS AND GRIT PUMP AFD ARE LOCATED INSIDE LCP-A1.
  - FOR EACH EQUIPMENT (CS) FURNISHED, PROVIDE THE FOLLOWING PLC I/O FOR MONITORING AND CONTROL AT THE PLANT SCADA:
    - RUN STATUS
    - IN AUTO MODE
    - FAIL ALARM
    - START/STOP CONTROL
- REFER TO SECTION 44 42 41, GRIT REMOVAL SYSTEM FOR ADDITIONAL MONITORING AND CONTROL REQUIREMENTS.

\$PWPATH



2085 LAKESIDE CENTRE WAY, SUITE 200 KNOXVILLE, TN 37922		McCROSKEY ISLAND WWTP EXPANSION CITY OF SEVIERVILLE, TN	
<b>Jacobs</b>			
PROCESS AND INSTRUMENTATION DIAGRAM <b>HEADWORKS GRIT &amp; GREASE REMOVAL SYSTEM NO. 2</b>			
NTS			
VERIFY SCALE			
BAR IS ONE INCH ON ORIGINAL DRAWING.			
DATE	JULY 2022	PROJ	C6A08007
DWG	008-N-0003	SHEET	of 080

NO.	DATE	REVISION	CHK	APVD
1	07/27/2022	ADDENDUM NO. 4	M LAL	G GRAY

DR	R OSEGUEDA
APVD	G GRAY
RO	G GRAY
ALP	G GRAY
BY	G GRAY

REUSE OF DOCUMENTS: THIS DOCUMENT, AND THE IDEAS AND DESIGNS INCORPORATED HEREIN, AS AN INSTRUMENT OF PROFESSIONAL SERVICE, IS THE PROPERTY OF JACOBS AND IS NOT TO BE USED, IN WHOLE OR IN PART, FOR ANY OTHER PROJECT WITHOUT THE WRITTEN AUTHORIZATION OF JACOBS. © JACOBS 2022. ALL RIGHTS RESERVED.