

ADDENDUM NO. 6  
TO THE CONTRACT DOCUMENTS  
for the construction of  
**McCROSKEY ISLAND WWTP EXPANSION**

Date: August 11, 2022  
Project No.: C6A08007

**City of Sevierville, TN**  
**McCroskey Island Wastewater Treatment Plant**

**To All Planholders and/or Prospective Bidders:**

The following changes, additions, and/or deletions are hereby made a part of the Contract Documents for the construction of **McCroskey Island WWTP Expansion** for Sevierville, Tennessee dated July 2022 as fully and completely as if the same were fully set forth therein:

**A. QUESTIONS AND ANSWERS**

1. Are Prime Coat and/or Geotextile Fabric intended for use in asphalt concrete paving and/or gravel surfacing applications? (The typical sections indicate these items are "If Specified".)

**Response:** Prime Coat will not be required for use in asphalt concrete paving. Geotextile Fabric will not be required for asphalt concrete paving or gravel surfacing. See PART 4, Drawings, Addendum No. 6.

2. On Drawing 030-S-2003, five aluminum mixer walkways are shown, and each span 29'-0". It is likely not possible to provide walkways of this length that will satisfy code requirements, and the load of the mixer equipment at mid span will add to the issue. On Drawing 050-S-2005, a situation similar to what is described above is shown. Would the use of galvanized steel (or stainless steel) walkways, with aluminum grating and aluminum handrails, be considered as an acceptable alternative in these locations?

**Response:** Clarify issue with design using aluminum members. Current design is based on aluminum members shown. Carbon steel members were avoided due to exposures expected from liquids. Stainless steel members would be considered as an alternate.

3. **Question:** On Drawing 030-S-2002, the notes on the details indicate the closure plate is to be aluminum. However, Sheet Keynote 2 indicate the plate is to be ½" stainless steel. Please clarify the intended material for the closure plate.

**Response:** See PART 4, Drawings, Addendum No. 6.

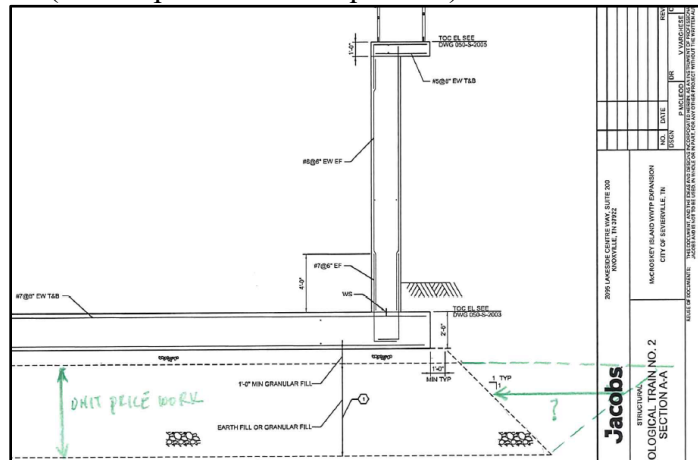
MCCROSKEY ISLAND WWTP EXPANSION

4. On Drawing 200-S-3001, Sheet Keynote 1 references Section 31 23 16 (Excavation) for rock excavation below the pump station. We find no mention of this information in the Excavation section. Please clarify.

**Response:** Specification 31 23 16 specifies that rock excavation is unclassified (3.02.A) and that blasting is not allowed (3.01.E). There is no other instruction for rock excavation in the specification for the pump station.

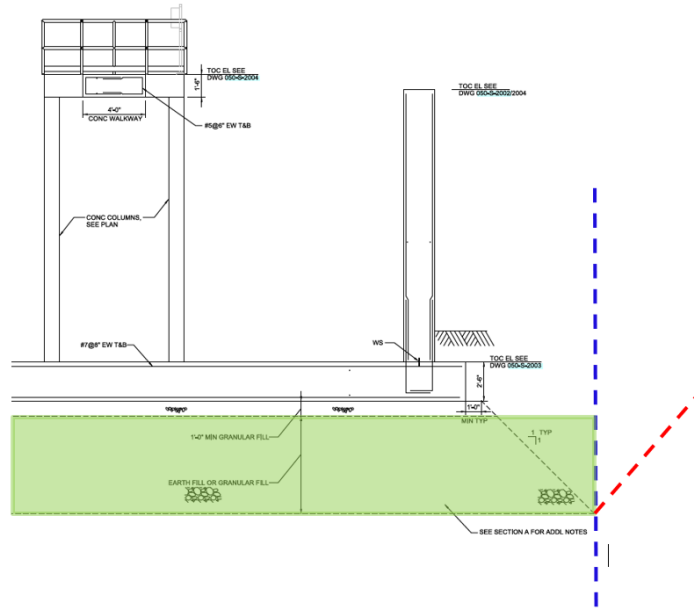
5. In Addendum No. 5, Question and Response #44 states "The overexcavation limits shown on the structural drawings, and associated notes, are not intended to define the limits of required overexcavation. See response to Question #9 in Addendum #3." To address the work to be included in the Unit-Price bid items, and the work to be included in the Base Bid, Contractors need to know: 1) where the lines will be drawn, and 2) how the work will be measured and paid. For example, Facility 050 will require excavation similar to what is depicted on the attached sketch. Per Addendum No. 5, Q and R #44, "Overexcavation starts at the bottom of the 1' minimum thickness granular fill layer." How will the necessary work (overexcavation and refill) to the right of the 1:1 slope be measured and paid? Please define these limits more accurately and confirm the methods for measurement and payment.

(Sketch provided with question)



**Response:** A vertical line from the toe of the over-excavation 1:1 slope is the limit of measurement for over-excavation. The image below shows the area for measurement of over-excavation in the shaded green box. The vertical dashed blue line is the limit of measurement; to the right of this line is where shoring would be provided, or as in the sketch provided, a sloped cut (red dashed line) would occur. The work to the right of the blue line is to be absorbed in the unit price pay item for over-excavation. This is consistent with the Payment Procedures 1.06.H table item 4 measurement description. This is typical for all locations of over-excavation. The method of measurement is field measure of the volume of over-excavation.

# MCCROSKEY ISLAND WWTP EXPANSION



6. Section 01 29 00 (Payment Procedures), Article 1.09B. states partial payment for properly delivered/stored equipment and materials is limited to fifty percent of the equipment/material cost. This puts the Contractor in the position of financing a portion of the project that could become a large amount of money. Additionally, the normal arrangement for stored material payments is to pay the Contractor 100% of the documented cost of the materials. Please revise the payment for stored materials and equipment to 100%.

**Response:** See Part 3, Specifications, Addendum No. 6.

7. **Question:** Section 44 42 41 Grit Removal System - 2.04-F – The grit pump is installed outdoors and is designed for intermittent operation in the system. Please consider adding verbiage for the contractor to provide heat tracing on the pump casing to deter freezing.

**Response:** See PART 3, Specifications and PART 4 Drawings, Addendum No. 6.

8. **Question:** Section 44 42 41 Grit Removal System -2.04-G – The Grit Washer is installed outdoors and is designed for intermittent operation in the system. Please consider adding verbiage for the contractor to provide heat tracing on the Grit Washer unit (including the wash water manifold and Grit Auger) to deter freezing.

**Response:** See PART 3, Specifications and PART 4 Drawings, Addendum No. 6.

## MCCROSKEY ISLAND WWTP EXPANSION

9. **Question:** Section 44 42 41 Grit Removal System - Induction Motor Data Sheet Supplement 1-7 – Space heaters/thermal protection are not called out for any of the induction motors in this section. Can you confirm that space heaters are not to be provided for the motors on this equipment?
- Response:** Space heaters/thermal protection have not been specified for the motors in this Section because they are all located in Hazardous Rated environments.
10. **Question:** Based on beam schedule volume 4, the Water to skirt (Based on contract drawing) = 896.5 ft – 4 ft – 888.0 ft (Max water level) = 4.5 ft. Ovivo recommends a minimum of 2'-6" water to skirt. However, due to the large gap below the skirt (i.e. 4.5 ft) , there may be some splashing onto the walkway. To prevent this being a problem, Ovivo recommends that they either put a FRP extension/ guards on the discharge end of the Aerator or extend the beam near the edge at the discharge end.
- Response:** See PART 4, Drawings, Addendum No. 6.
11. **Question:** Section 44 46 13.02 Screw Conveyor System - Paragraph 2.04.A.3. specifies flights to be manufactured from cold formed spring steel with minimum hardness of 200 Brinnell; this conflicts with Supplement 1 – Screw Conveyor Schedule which specifies spiral material as 304 Stainless Steel.
- Response:** See PART 3, Specifications, Addendum No. 6.
12. **Question:** Section 44 46 13.02 Screw Conveyor System - Paragraph 2.04.E.4. Specifies double bearings at the trough end. Conventional shaftless screw design uses no bearings, as the bearings are integral to the drive end gear reducer.
- Response:** See PART 3, Specifications, Addendum No. 6.
13. Section 13 34 23 Precast Fabricated Structures paragraph 2.03 B5. Please verify if your intent is to have a sandwich panel roof assembly or a roof assembly that is insulated in the field. It seems that the walls for these are spec'd as sandwich panels with specific R values, and an insulated roof. I'm certain that the roof panels would have to be field insulated by the GC as that is something we cannot do on a building this size...having said that, it may be better to quote this as a solid uninsulated panel with all of the insulation done after the building is erected.
- Response:** The specifications require sandwich panels for both the walls and roof. The Engineer coordinated with a supplier during design where this type of roof system is available for a building of this size.

**B. PART 1, PROCUREMENT REQUIREMENTS**

1. Section 00 41 13, BID FORM, REPLACE in its entirety with the enclosed BID FORM. The requirement for the Steel Scrap Index is removed from the Bid Form. See Part 3, Specifications for corresponding change to 01 29 00, PAYMENT PROCEDURES.

**C. PART 2, CONTRACTING REQUIREMENTS**

- 1.

**D. PART 3, SPECIFICATIONS**

1. Section 01 29 00, PAYMENT PROCEDURES

Page 5, DELETE Paragraph 1.06.I in its entirety.

Page 6, DELETE Paragraph 1.07.C in its entirety and renumber the subsequent paragraphs.

Page 7, Paragraph 1.09.A.1, in the last sentence of the paragraph, DELETE “is limited to fifty percent of the equipment/material cost.” and REPLACE with “shall be one-hundred percent of the equipment/material cost.”

2. Section 40 05 33, PIPE HEAT TRACING

- a. Paragraph 3.01.B.4. Heat Trace Schedule: ADD Notes below:

5. Heat trace and insulate Grit Washer (including the wash water manifold and Grit Auger).

6. Heat trace and insulate Grit Pump (casing).

3. Section 44 46 13.02, SCREW CONVEYOR SYSTEM:

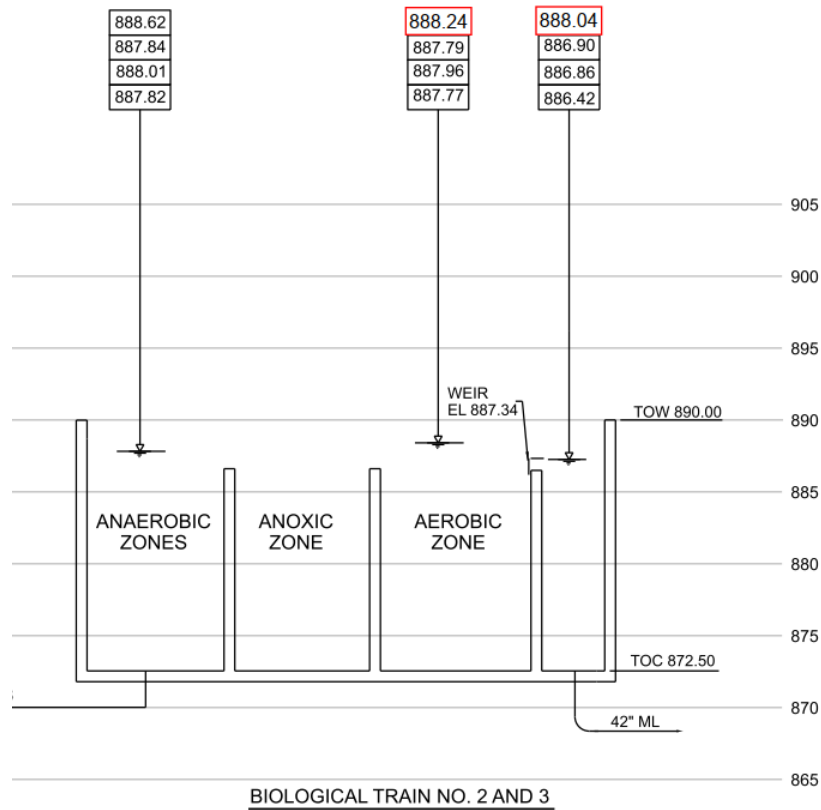
- a. Paragraph 2.04.E.4. DELETE this paragraph in its entirety.

- b. Supplement 1, Screw Conveyor Schedule, Spiral Material: CHANGE to “See Paragraph 2.04.A.3.”

MCCROSKEY ISLAND WWTP EXPANSION

**E. PART 4, DRAWINGS**

1. Drawing 001-G-0015: REVISE the water elevations noted below:



2. Drawing 005-C-9003, Detail 3212-210:

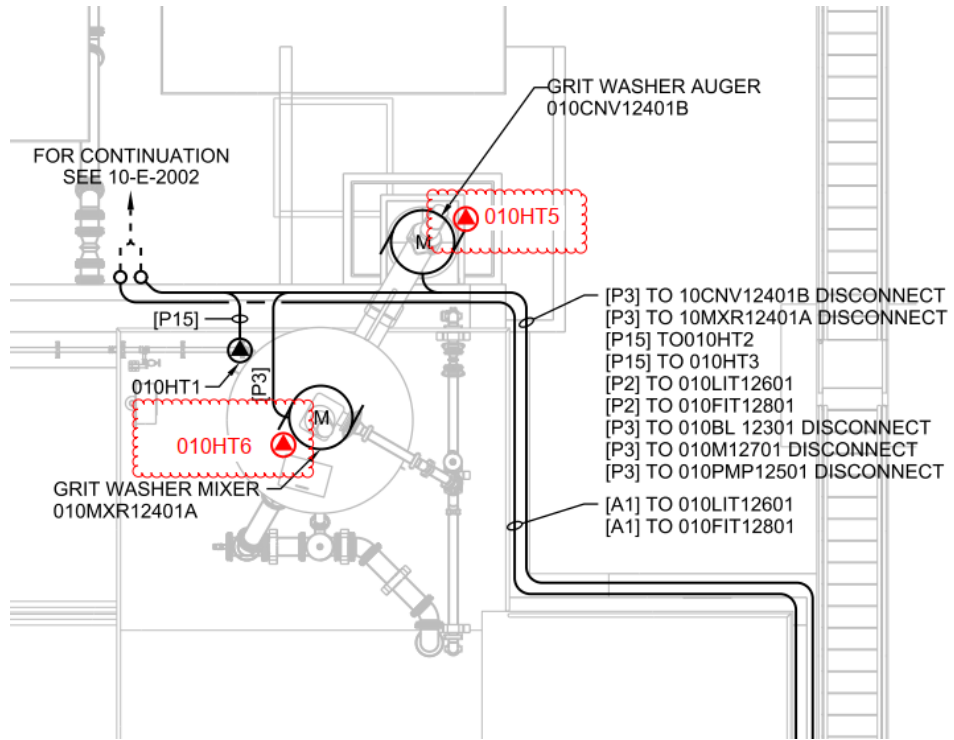
- a. DELETE callout “PRIME COAT (IF SPECIFIED)”
- b. DELETE callout “GEOTEXTILE (IF SPECIFIED)”

3. Drawing 005-C-9004, Detail 3215-260:

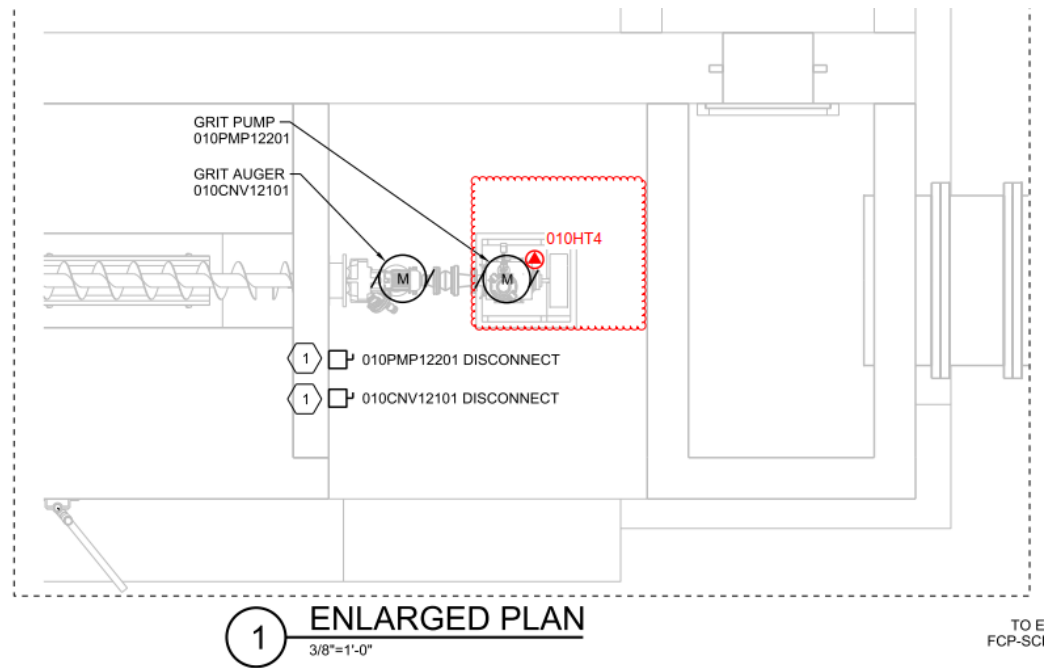
- a. DELETE callout “GEOTEXTILE (IF SPECIFIED)”

MCCROSKEY ISLAND WWTP EXPANSION

4. Drawing 010-E-2001, Top Plan - : REVISE as noted below:

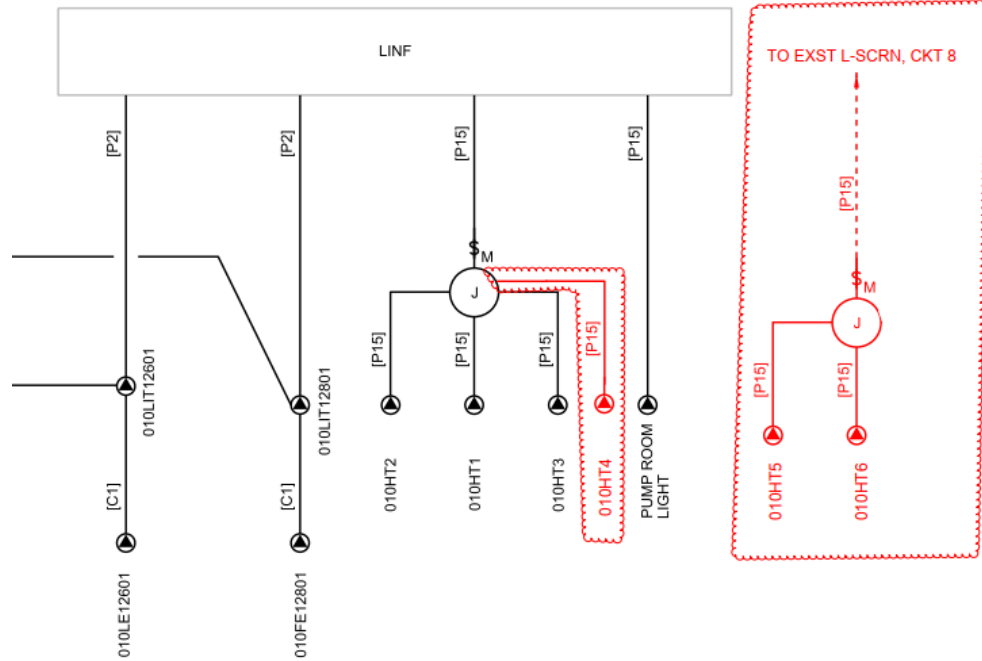


5. Drawing 010-E-2002, Enlarged Plan - : REVISE as noted below:



MCCROSKEY ISLAND WWTP EXPANSION

6. Drawing 010-E-6001, Cable Block Diagram: REVISE as noted below:

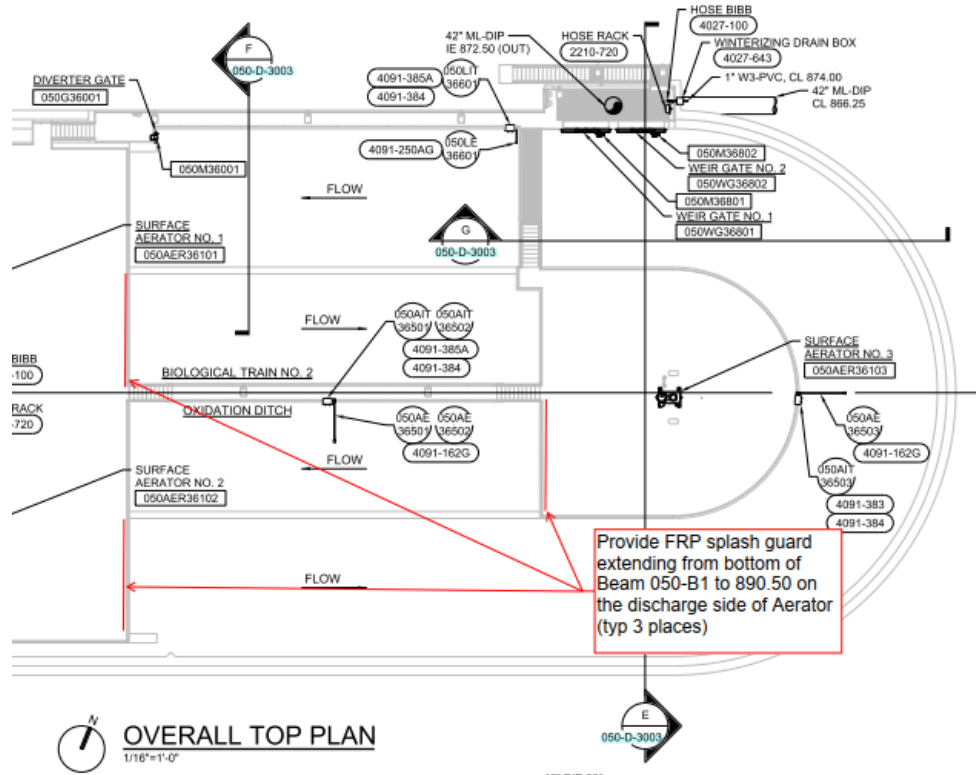


7. Drawing 030-S-2002:

- a. Intermediate Plan – DELETE “AL” from label of Closure Plate Detail.
- b. Closure Plate Detail – CHANGE title of Detail to “DETAIL CLOSURE PLATE”.

MCCROSKEY ISLAND WWTP EXPANSION

8. Drawing 050-D-2001: Top Plan - ADD the following note:



All Bidders shall acknowledge receipt and acceptance of this Addendum No. 6 in the Bid Form or by submitting the Addendum with the bid package. Bid Forms submitted without acknowledgment or without this Addendum will be considered in nonconformance.

Jacobs

*John C. Lang*  
 \_\_\_\_\_  
 Project Manager

Appended hereto and part of Addendum No. 6:  
 00 41 13 BID FORM

**END OF ADDENDUM**

NOTE TO BIDDER: Use typewriter or ink for completing this Bid Form.

**BID FORM  
(STIPULATED PRICE BASIS)**

1. BID RECIPIENT

1.1. This Bid is submitted to:

Owner: City of Sevierville  
Address: 120 Gary R. Wade Blvd., Sevierville, TN 37862  
Project Identification: McCroskey Island WWTP Expansion

1.2. The undersigned Bidder proposes and agrees, if this Bid is accepted, to enter into an Agreement with Owner in the form included in the Bidding Documents to perform all Work as specified or indicated in the Bidding Documents for the prices and within the times indicated in this Bid and in accordance with the other terms and conditions of the Bidding Documents.

2. BIDDER'S ACKNOWLEDGEMENTS

2.1. Bidder accepts all of the terms and conditions of the Instructions to Bidders, including without limitation those dealing with the disposition of Bid security. This Bid will remain subject to acceptance for 90 days after the Bid opening, or for such longer period of time that Bidder may agree to in writing upon request of Owner.

3. BIDDER'S REPRESENTATIONS

3.1. In submitting this Bid, Bidder represents that:

3.1.1. Bidder has examined and carefully studied the Bidding Documents, the other related data identified in the Bidding Documents, and the following Addenda, receipt of which is hereby acknowledged.

<b>Addendum No.</b>	<b>Addendum Date</b>

(Bidder shall insert number of each Addendum received.)

## MCCROSKEY ISLAND WWTP EXPANSION

3.1.2. Bidder has visited the Site and become familiar with and is satisfied as to the general, local, and Site conditions that may affect cost, progress, and performance of the Work.

3.1.3. Bidder is familiar with and is satisfied as to all Laws and Regulations that may affect cost, progress, and performance of the Work.

3.1.4. Bidder has carefully studied: i) reports of explorations and tests of subsurface conditions at or contiguous to the Site and drawings of physical conditions relating to existing surface or subsurface structures at the Site (except Underground Facilities) which have been identified in Paragraph 5.03 of the Supplementary Conditions as containing reliable “technical data,”; and ii) reports and drawings of Hazardous Environmental Conditions, if any, at the Site that have been identified in Paragraph 5.06 of the Supplementary Conditions as containing reliable “technical data.”

3.1.5. Bidder has considered the information known to Bidder; information commonly known to Contractors doing business in the locality of the Site; information and observations obtained from visits to the Site; the Bidding Documents; and the Site-related reports and drawings identified in the Bidding Documents, with respect to the effect of such information, observations, and documents on (1) the cost, progress, and performance of the Work; (2) the means, methods, techniques, sequences, and procedures of construction to be employed by Bidder, including applying the specific means, methods, techniques, sequences, and procedures of construction expressly required by the Bidding Documents; and (3) Bidder’s safety precautions and programs.

3.1.6. Based on information and observations referred to in paragraph above, Bidder does not consider that further examinations, investigations, explorations, tests, studies, or data are necessary for the determination of this Bid for performance of the Work at the price(s) Bid and within the times required, and in accordance with the other terms and conditions of the Bidding Documents.

3.1.7. Bidder is aware of the general nature of work to be performed by Owner and others at the Site that relates to the Work as indicated in the Bidding Documents.

3.1.8. Bidder has given Engineer written notice of conflicts, errors, ambiguities, or discrepancies that Bidder has discovered in the Bidding Documents, and the written resolution thereof by Engineer is acceptable to Bidder.

3.1.9. The Bidding Documents are generally sufficient to indicate and convey understanding of terms and conditions for the performance of the Work for which this Bid is submitted.

4. BIDDER'S CERTIFICATION

4.1. Bidder certifies:

4.1.1. This Bid is genuine and not made in the interest of or on behalf of any undisclosed individual or entity and is not submitted in conformity with any collusive agreement or rules of any group, association, organization or corporation;

4.1.2. Bidder has not directly or indirectly induced or solicited any other Bidder to submit a false or sham Bid;

4.1.3. Bidder has not solicited or induced any individual or entity to refrain from bidding; and

4.1.4. Bidder has not engaged in corrupt, fraudulent, collusive, or coercive practices in competing for the Contract. For the purposes of this paragraph:

4.1.4.1. "corrupt practice" means the offering, giving, receiving, or soliciting of anything of value likely to influence the action of a public official in the bidding process;

4.1.4.2. "fraudulent practice" means an intentional misrepresentation of facts made (a) to influence the bidding process to the detriment of Owner, (b) to establish Bid prices at artificial noncompetitive levels, or (c) to deprive Owner of the benefits of free and open competition;

4.1.4.3. "collusive practice" means a scheme or arrangement between two or more Bidders, with or without the knowledge of Owner, a purpose of which is to establish Bid prices at artificial, noncompetitive levels; and

4.1.4.4. "coercive practice" means harming or threatening to harm, directly or indirectly, persons or their property to influence their participation in the bidding process or affect the execution of the Contract.

4.1.5. Required sales and use taxes are included in the stated Bid prices for the Work unless provision is made herein for the Bidder to separately itemize the estimated amount of sales tax or if Instructions to Bidders state Owner is tax exempt.

MCCROSKEY ISLAND WWTP EXPANSION

5. BASIS OF BIDS

5.1. Bidder shall complete the Work, with the exception of Unit Price Work described in Paragraph 5.2, in accordance with the Contract Documents for the following price(s):

Lump Sum Price for Work: \$\_\_\_\_\_.

5.2. Unit Price Work:

Unit Price Work Bid Schedule					
Item No.	Description	Estimated Quantity	Unit	Bid Unit Price	Extended Bid Price
1	Mobilization and Demobilization for Digester Cleaning Work	1	LS	\$	\$
2	Digester Cleaning	1	LS	\$	\$
3	Disposal of Digester Contents	20	Dry Ton	\$	\$
4	Over-Excavation Under Pavement and Under Facilities not Considered for Contractor Designed Ground Improvement as Specified in Section 31 68 20, Contractor Designed Ground Improvement	7,000	CY-FM	\$	\$
5	Biological Train No. 2 (Facility 050) Subgrade Work ( <i>Enter Cost for Only One of the below Bid Items, 5A or 5B</i> )				
	5A. Over-Excavation for Facility No. 050	12,000	CY-FM	\$	\$
	5B. Ground Improvement for Facility 050	1	LS	\$	\$
6	Clarifier No. 3 and No. 4 (Facilities 090 and 091) Subgrade Work ( <i>Enter Cost for Only One of the below Bid Items, 6A or 6B</i> )				
	6A Over-Excavation for Facilities 090 and 091	13,500	CY-FM	\$	\$

MCCROSKEY ISLAND WWTP EXPANSION

Unit Price Work Bid Schedule					
Item No.	Description	Estimated Quantity	Unit	Bid Unit Price	Extended Bid Price
	6B Ground Improvement for Facilities 090 and 091	1	LS	\$	\$
7	Electrical No. 1 (Facility 115) Subgrade Work ( <i>Enter Cost for Only One of the below Bid Items, 7A or 7B</i> )				
	7A Over-Excavation for Facility 115	1,350	CY-FM	\$	\$
	7B Ground Improvement for Facility 115	1	LS	\$	\$
8	Electrical No. 2 (Facility 145) Subgrade Work ( <i>Enter Cost for Only One of the below Bid Items, 8A or 8B</i> )				
	8A Over-Excavation for Facility 115	1,500	CY-FM	\$	\$
	8B Ground Improvement for Facility 115	1	LS	\$	\$
Total of Extended Bid Prices for Unit Price Work					\$

5.3. Contingency Allowance: A Contingency Allowance of **\$250,000.00** is established and is computed in accordance with Paragraph 13.02.C of the General Conditions.

5.4. Total Bid: Lump Sum Price for Work (paragraph 5.1) plus Total of Extended Bid Prices for Unit Price Work (paragraph 5.2) plus Contingency Allowance (paragraph 5.3): \$\_\_\_\_\_.

5.4.1. In Words: \_\_\_\_\_  
 \_\_\_\_\_

6. TIME OF COMPLETION

6.1. Bidder agrees the Work will be substantially complete and will be completed and ready for final payment in accordance with Paragraph 15.06 of the General Conditions within the number of calendar days indicated in the Agreement.

6.2. Bidder accepts the provisions of the Agreement as to liquidated damages in the event of failure to complete the Work, and any specified Milestones, within the Contract Times.

MCCROSKEY ISLAND WWTP EXPANSION

7. ATTACHMENTS TO THIS BID

7.1. The following documents are submitted with and made a condition of this Bid:

7.1.1. Required Bid security in the form of Bid bond or certified check.

7.1.2. Evidence of authority to do business in the state of the Project; or a written covenant to obtain such license within the time for acceptance of Bids.

7.1.3. Contractor's License No.: \_\_\_\_\_.

7.1.4. Drug-Free Workplace Affidavit.

7.1.5. Title VI Information.

7.1.6. W-9 Form.

7.1.7. Business Tax and License Affidavit.

7.1.8. Vendor Information Form.

7.2. The terms used in this Bid with initial capital letters have the meanings stated in the Instructions to Bidders, the General Conditions, and the Supplementary Conditions.

7.3. BID SUBMITTAL

7.4. This Bid submitted by:

If Bidder is:

An Individual

Name (typed or printed): \_\_\_\_\_

By (signature): \_\_\_\_\_

Doing business as: \_\_\_\_\_

A Partnership

Partnership Name: \_\_\_\_\_ (SEAL)

By: \_\_\_\_\_  
*(Signature of general partner – attach evidence of authority to sign)*

Name (typed or printed): \_\_\_\_\_

MCCROSKEY ISLAND WWTP EXPANSION

A Corporation

Corporation Name: \_\_\_\_\_ (SEAL)

State of Incorporation: \_\_\_\_\_

Type (General Business, Professional, Service, Limited Liability): \_\_\_\_

By: \_\_\_\_\_

*(Signature – attach evidence of authority to sign)*

Name (typed or printed): \_\_\_\_\_

Title: \_\_\_\_\_ (CORPORATE SEAL)

Attest: \_\_\_\_\_

*(Signature of Corporate Secretary)*

Date of Qualification to do business in Tennessee is: \_\_\_\_\_.

Bidder's Business Address: \_\_\_\_\_

\_\_\_\_\_

Phone No.: \_\_\_\_\_ FAX No.: \_\_\_\_\_

E-mail: \_\_\_\_\_

SUBMITTED on \_\_\_\_\_, 20\_\_\_\_\_

Tennessee Contractor's License No.: \_\_\_\_\_

Contractor's License Class (where applicable): \_\_\_\_\_

**END OF SECTION**